

Chapter 13 User Setup

13.1 Open User Setup

Click on “Options” and select “User Setup” then pop-up an “Input Password” dialog box(Image 13-1). Input the password “888” and click “OK” button, as shown in Image 13-2.

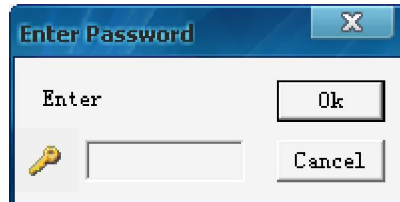


Figure 13-1

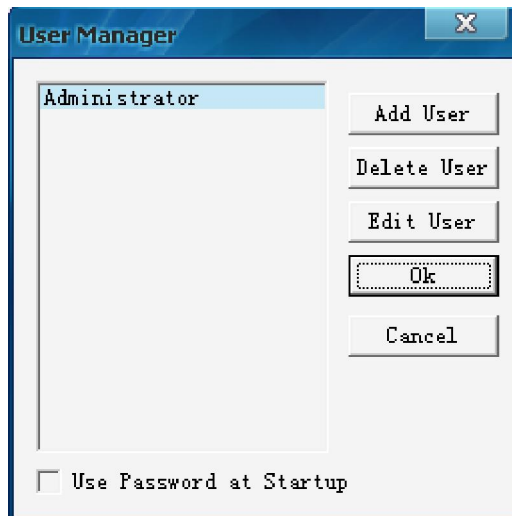


Figure 13-2

13.2 Add user

Click on “Add User” in image 13-2, a dialog box like image 13-3 will appear. Enter User name and password, then press “OK”.

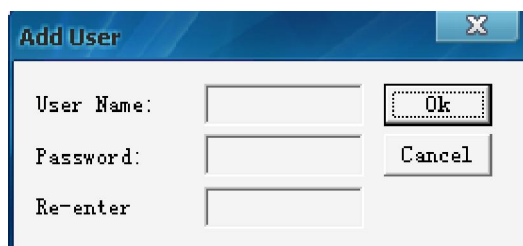


Figure 13-3

13.3 Delete User

Select an exist user on the list (Image 13-2), (Note: Administrator can not be deleted) then select “delete”. A notice frame will appear, select “Yes”.

13.4 Change Password

Select an exist user on the list (Image 13-2), click “change password” button. Enter the new password in the “Change password” dialog box, then press “ok”.

13.5 User Authentication

If you tick the box before “Use password at Startup”,as shown in image 13-4, then User Authentication will be required when running LED editor Software next time.

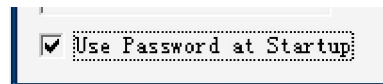


Figure 13-4